

# LOS ANGELES COUNTY WATERWORKS DISTRICT NO. 29

## BONSALL DRIVE AND CALPINE DRIVE WATERLINE IMPROVEMENTS

### Scope:

Replace over 7,500 feet of 8-inch waterline.

### Location:

City of Malibu — Along Pacific Coast Hwy, Bonsall Drive, and Calpine Drive

### Benefits:

Improve water quality, system reliability, and protect health and safety of existing customers.

### Status:

Concept phase

### Start construction:

TBD



# LOS ANGELES COUNTY WATERWORKS DISTRICT NO. 29

## CARBON MESA TANK IMPROVEMENT

### Scope:

Replace 100,000 gallon tank with a larger tank.

### Location:

City of Malibu

### Benefits:

Improve water quality, system reliability, and protect health and safety of existing customers.

### Status:

Concept phase

### Start construction:

TBD



# LOS ANGELES COUNTY WATERWORKS DISTRICT NO. 29

## ENCINAL CANYON ROAD WATERLINE IMPROVEMENTS

### Scope:

Replace 6,000 feet of 4-inch and 6-inch aging waterlines.

### Location:

City of Malibu — Encinal Canyon Rd., Avenida Del Mar, Via Vienta, and Vista De Los Ondas

### Benefits:

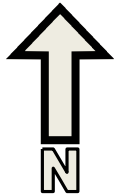
Improve water quality, system reliability, and protect health and safety of existing customers.

### Status:

Concept phase 96

### Start construction:

TBD



# LOS ANGELES COUNTY WATERWORKS DISTRICT NO. 29

## ESCONDIDO CANYON WATERLINE IMPROVEMENTS

### Scope:

Replace over 9,500 feet of aging 4-inch and 6-inch waterlines.

### Location:

City of Malibu

- Along Via Escondido Drive, Sycamore Meadow Drive, and Tantalus Drive
- Along Delaplane Road, W. Winding Way, and Pacific Coast Highway
- Along Sea Vista Drive and Via Linda Street

### Benefits:

Improve water quality, system reliability, and protect health and safety of existing customers.

### Status:

Concept phase

### Start construction:

TBD



# LOS ANGELES COUNTY WATERWORKS DISTRICT NO. 29

## LAS FLORES CANYON WATERLINE IMPROVEMENTS

### Scope:

Replace over 5,500 feet of leak prone, aging, and deteriorated 2-inch and 4-inch waterlines.

### Location:

City of Malibu — Rambla Pacifico St., Eagle Pass Dr., and Las Flores Mesa Dr.

### Benefits:

Improve water quality, system reliability, and protect health and safety of existing customers.

### Status:

Concept phase

### Start construction:

TBD



# LOS ANGELES COUNTY WATERWORKS DISTRICT NO. 29

## LAS FLORES MESA TANK IMPROVEMENT

### Scope:

Replace an aging and deteriorated 100,000 gallon tank.

### Location:

City of Malibu

### Benefits:

Improve water quality, system reliability, and protect health and safety of existing customers.

### Status:

Concept phase

### Start construction:

TBD



# LOS ANGELES COUNTY WATERWORKS DISTRICT NO. 29

## MALIBU LAGOON WATERLINE IMPROVEMENTS

### Scope:

Replace 6,000 feet of leak prone, severely deteriorated, and aging 2-inch, 4-inch, and 6-inch waterlines.

### Location:

City of Malibu — Sweetwater Canyon Dr., Beckledge Terrace, Ridgemont Dr., Coast View Dr., Colony View Circle, and Potter Dr.

### Benefits:

Improve water quality, system reliability, and protect health and safety of existing customers.

### Status:

Concept phase

### Start construction:

TBD



# LOS ANGELES COUNTY WATERWORKS DISTRICT NO. 29

## MARQUETTE DRIVE AND TOPANGA SKYLINE DRIVE WATERLINE IMPROVEMENTS

### Scope:

Replace over 9,000 feet of significantly deteriorated 6-inch waterline.

### Location:

Unincorporated Community of Topanga — Marquette Drive, Topanga Skyline Drive, Oak Drive, and Topanga Easement Road.

### Benefits:

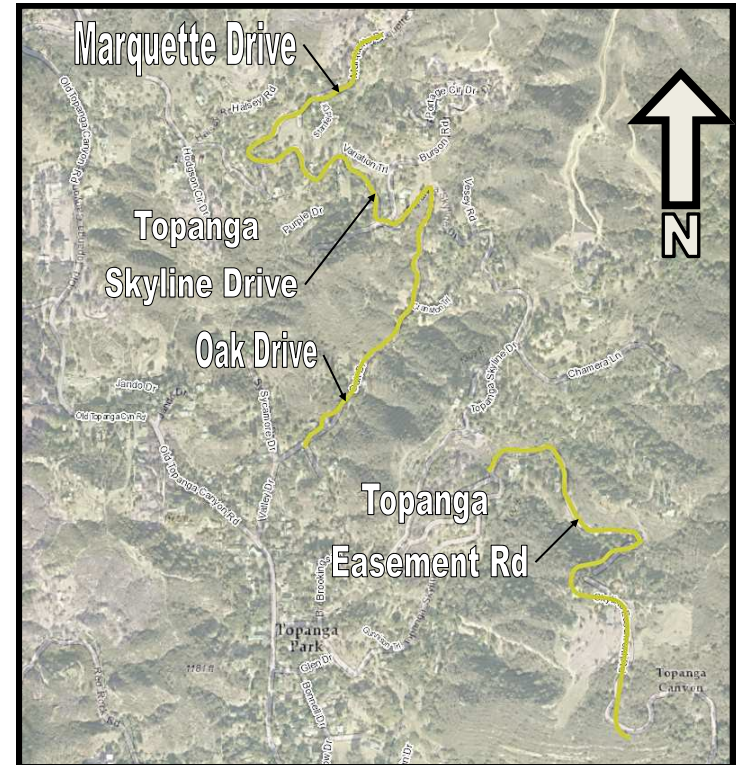
Improve water quality, system reliability, and protect health and safety of existing customers.

### Status:

Concept phase

### Start construction:

TBD





# LOS ANGELES COUNTY WATERWORKS DISTRICT NO. 29

## PCH AND SEA LEVEL DRIVE WATERLINE IMPROVEMENTS

### Scope:

Replace over 4,000 feet of aging 6-inch waterline.

### Location:

City of Malibu — along Pacific Coast Highway and Sea Level Drive

### Benefits:

Improve water quality, system reliability, and protect health and safety of existing customers.

### Status:

Concept phase

### Start construction:

TBD



# LOS ANGELES COUNTY WATERWORKS DISTRICT NO. 29

## PHILIP TANK IMPROVEMENT

### Scope:

Replace 250,000 gallon tank with a larger tank.

### Location:

City of Malibu

### Benefits:

Improve water quality, system reliability, and protect health and safety of existing customers.

### Status:

Concept phase

### Start construction:

TBD



# LOS ANGELES COUNTY WATERWORKS DISTRICT NO. 29

## PORTSHEAD TANK IMPROVEMENT

### Scope:

Replace a 120,000 gallon tank that was aging and severely deteriorated.

### Location:

City of Malibu

### Benefits:

Improve water quality, system reliability, and protect health and safety of existing customers.

### Status:

Concept phase

### Start construction:

TBD



# LOS ANGELES COUNTY WATERWORKS DISTRICT NO. 29

## TUNA CANYON WATERLINE IMPROVEMENTS

### Scope:

Replace over 5,500 feet of leak prone, aging, and deteriorated 6-inch waterline.

### Location:

Unincorporated Community of Topanga — Tuna Canyon Rd.

### Benefits:

Improve water quality, system reliability, and protect health and safety of existing customers.

### Status:

Concept phase

### Start construction:

TBD



# LOS ANGELES COUNTY WATERWORKS DISTRICT NO. 29

## UPPER ENCINAL WATERLINE IMPROVEMENT

### Scope:

Replace over 4,500 feet of aging, and deteriorated 4-inch and 6-inch waterline.

### Location:

City of Malibu

### Benefits:

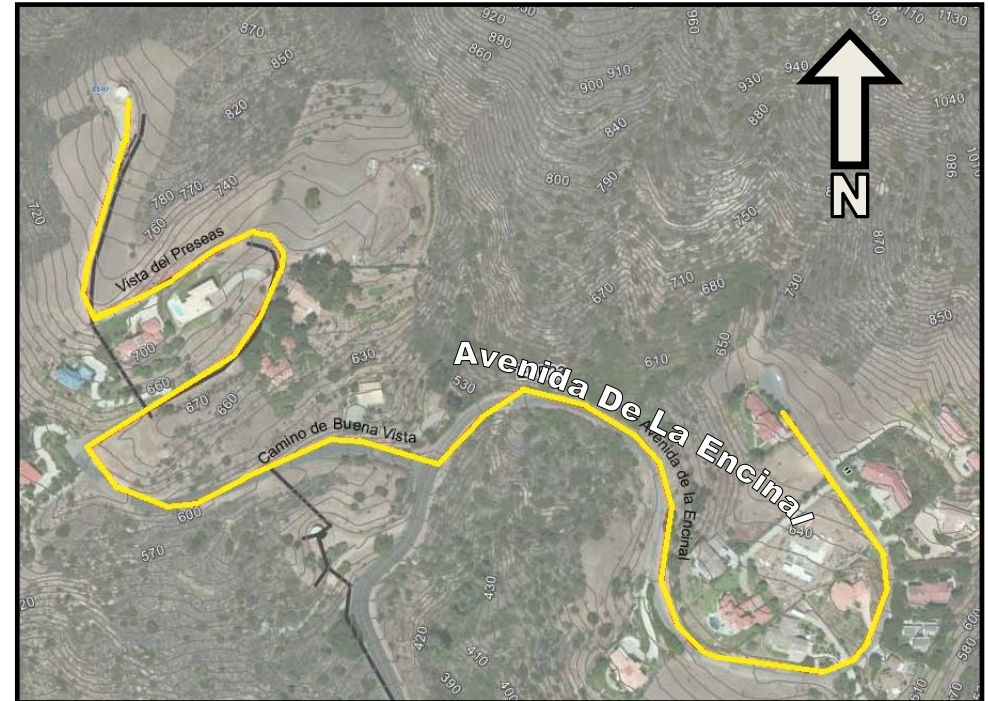
Improve water quality, system reliability, and protect health and safety of existing customers.

### Status:

Concept phase

### Construction:

TBD



# LOS ANGELES COUNTY WATERWORKS DISTRICT NO. 29

## WAVEVIEW DRIVE AND COLINA DRIVE WATERLINE IMPROVEMENTS

### Scope:

Replace approximately 5,500 feet of aging existing 6-inch waterline.

### Location:

Unincorporated Community of Topanga — Waveview Drive and Colina Drive

### Benefits:

Improve water quality, system reliability, and protect health and safety of existing customers.

### Status:

Concept phase

### Start construction:

TBD

